

FORMULATION GUIDE

in-cosmetics Latin America 2024





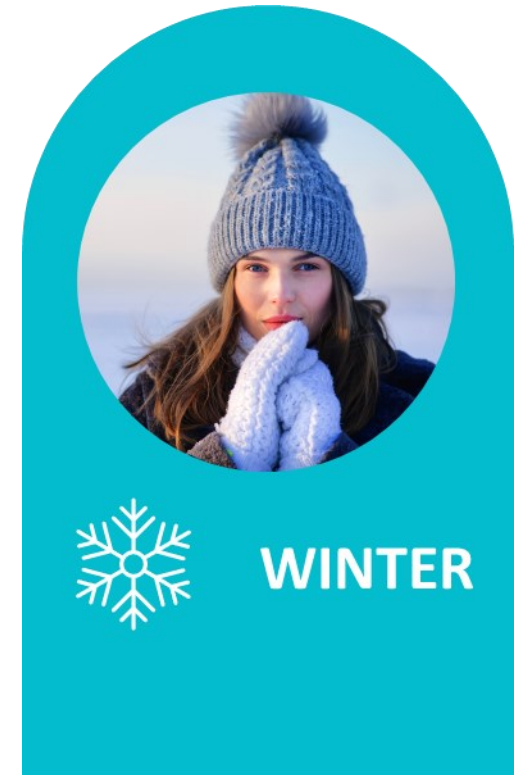
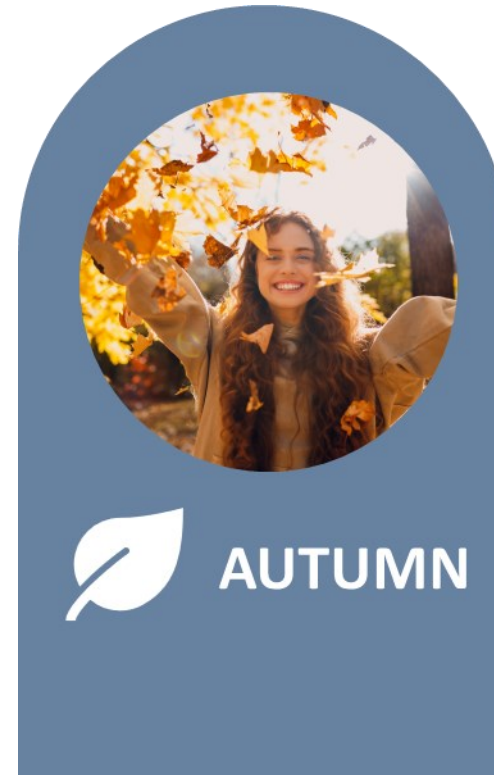
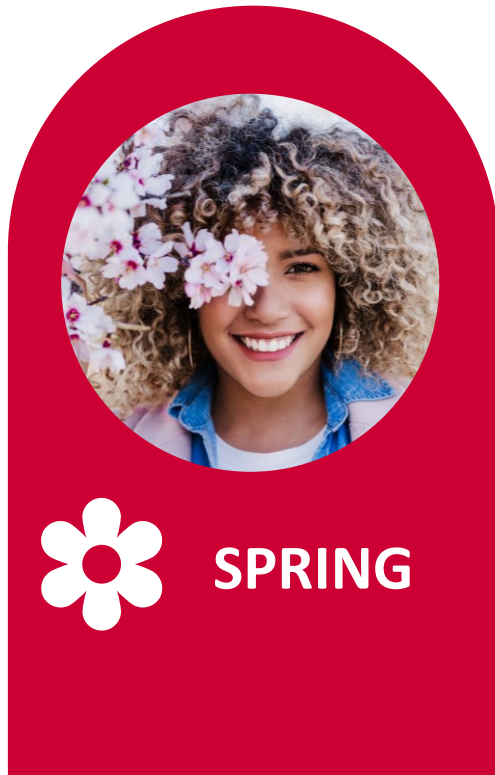
live your 4 seasons

with SURFONIC® BIO

INDORAMA
VENTURES

Choosing solutions that respect **nature**, and **science** is an important step for healthy and balanced skin throughout the seasons of the year.

With this in mind, Indorama Ventures presents **live your 4 seasons**, with **SURFONIC® BIO line**, biosurfactants for cosmetic formulations during all the seasons.





SPRING

PRETTY LIKE SPRING BLOOM

SURFONIC® BIO is gentle to the skin and helps control oiliness, while also providing formulations with a soft and velvety touch for spring days.



FACIAL CARE

Spring Bloom Facial Soap

- Sulfate free
- Daily use - detox
- Care cleansing
- Mild to the skin



HAIR CARE

Hair Jelly Spring Bloom

- Transparent formulation
- Mild and gentle
- Moist after feel
- Non sticky and Non-oily feel



SKIN CARE

Velvety Spring Body Cream

- Preservative free
- Dermatologically tested
- COSMOS Certified
- Mild and gentle to skin

PRETTY LIKE SPRING BLOOM SUGGESTIVE FORMULATION

Spring Bloom Facial Soap

PHASE	COMPONENTS	CHEMICAL DESCRIPTION	% BY WEIGHT	FUNCTION
A	Water	Aqua	q.s.p. to 100	Vehicle
A	GLICENAT® GC K	Glycerin	3.00	Humectant
B	SURFONIC® BIO 5000	Glycolipids	5.00	Surfactant
B	SURFONIC® BIO 6000	Glycolipids	3.00	Surfactant
B	OXITAINE® CP 30 APH	Cocomidopropyl Betaine	10.0	Surfactant
B	GLUCOSURF® 100	Decyl Glucoside	6.00	Surfactant
B	ALKEST® TW 20	Polysorbate 20	0.60	Solubilizer
B	OXISMOOTH® CO	Isoamyl Cocoate	0.30	Emollient
A	Sodium Benzoate	Sodium Benzoate	0.70	Preservative
B	Fragrance	Parfum	1.50	Perfuming
C	OXIFLOW® S 6800	Sorbeth-450 Tristearate (and) Water (and) PEG-9 Cocoate (and) PEG-32 Distearate (and) PEG-175 Distearate	4.29	Rheology modifier
C	Sodium Chloride	Sodium Chloride	2.00	Rheology modifier
C	Citric Acid 50%	Citric Acid	q.s.p. to pH	pH adjuster
C	Sodium Hydroxide 50%	Sodium Hydroxide	q.s.p. to pH	pH adjuster



FUNCTIONALITY: Cleansing and Hydration
TEXTURE/SENSORY: Soft, Light and Gentle

DISCOVER MORE ABOUT OUR SPECIALTY PRODUCT LINE:

SURFONIC® BIO 5000 (Glycolipids): acts as main or co-surfactant promoting mild cleansing.

SURFONIC® BIO 6000 (Glycolipids): performs outstanding, delivering spreadability and moist feel to the skin.

GLUCOSURF® 100 (Decyl Glucoside): Acts as foam stabilizers, providing rich creamy foam during application due to the formation of small homogeneous bubbles.

OXISMOOTH® CO (Isoamyl Cocoate): An efficient green alternative for silicone as skin and hair conditioning agent.

OXIFLOW® S 6800 (Sorbeth-450 Tristearate (and) Water (and) PEG-9 Cocoate (and) PEG-32 Distearate (and) PEG-175 Distearate): efficient thickening of surfactant-based systems, especially salt and sulfate-free formulations which does not require neutralization.

WARNING TO USERS

The above formulation is just a suggestion. All information, including the conditions of use of Indorama Ventures' products, should not replace the experimental checks that are essential to ensure and tailor the product for each specific application. It is the responsibility of the final formulator to respect the local legislation and obtain any required authorizations.
 #SR 0921.23

PRETTY LIKE SPRING BLOOM SUGGESTIVE FORMULATION

Hair Jelly Spring Bloom

PHASE	COMPONENTS	CHEMICAL DESCRIPTION	% BY WEIGHT	FUNCTION
A	Water	Aqua	q.s.p to 100	Vehicle
A	GLICENAT® 260	Glicereth-26	1.00	Humectant
C	OXIFLOW® S 6800	Sorbeth-450 Tristearate (and) Water (and) PEG-9 Cocoate (and) PEG-32 Distearate (and) PEG-175 Distearate	4.29	Rheology modifier
B	SURFONIC® BIO 5000	Glycolipids	6.00	Surfactant
A	Pantenol	Pantenol	1.00	Active
A	Hydrolyzed Wheat Protein	Hydrolyzed Wheat Protein	0.30	Active
B	Fragrance	Parfum	1.50	Perfuming
B	ALKEST® CSO 400 H	Peg-40 Hydrogenated Castor Oil	2.00	Solubilizer
B	OXISENSE® S 0440	PEG-4/PEG-6/PEG-7/PEG-8 (and) Castor Oil Hydrogenated Ethoxylated (and) Water	2.04	Conditioning agent
B	OXISMOOTH® CO	Isoamyl Cocoate	0.50	Emollient
C	Caprylyl Glycol (and) Phenoxyethanol	Caprylyl Glycol (and) Phenoxyethanol	0.50	Preservative
A	Sodium Benzoate	Sodium Benzoate	0.50	Preservative
D	Sodium Hydroxide	Sodium Hydroxide	q.s.p to pH	pH adjuster
D	Citric Acid (50% sol)	Citric Acid	q.s.p to pH	pH adjuster



FUNCTIONALITY: Hydration and Styling
TEXTURE/SENSORY: Soft, Light and Smooth

DISCOVER MORE ABOUT OUR SPECIALTY PRODUCT LINE:

SURFONIC® BIO 5000 (Glycolipids): acts as main or co-surfactant that facilitates wet hair combing.

OXISENSE® S 0440 (PEG-4/PEG-6/PEG-7/PEG-8 (and) Castor Oil Hydrogenated Ethoxylated (and) Water): Conditioning agent for hair care products that promotes frizz control.

OXISMOOTH® CO (Isoamyl Cocoate): An efficient green alternative for silicone as skin and hair conditioning agent.

OXIFLOW® S 6800 (Sorbeth-450 Tristearate (and) Water (and) PEG-9 Cocoate (and) PEG-32 Distearate (and) PEG-175 Distearate): efficient thickening of surfactant-based systems, especially salt and sulfate-free formulations which does not require neutralization.

WARNING TO USERS

The above formulation is just a suggestion. All information, including the conditions of use of Indorama Ventures' products, should not replace the experimental checks that are essential to ensure and tailor the product for each specific application. It is the responsibility of the final formulator to respect the local legislation and obtain any required authorizations.
 #SR 0921.23

PRETTY LIKE SPRING BLOOM SUGGESTIVE FORMULATION

Velvety Spring Body Cream

PHASE	COMPONENTS	CHEMICAL DESCRIPTION	% BY WEIGHT	FUNCTION
A	Water	Aqua	q.s.p. to 100	Vehicle
A	GLICENAT® 260	Glycereth-26	2.00	Humectant
A	SURFONIC® BIO 6000	Glycolipids	4.00	Co Surfactant
B	Shea Butter	Butyrospermum Parkii Butter	1.00	Emollient
B	Candelilla Wax	Candelilla Wax	2.00	Emollient
A	ALKONT® SSL	Sodium Lauroyl Lactylate	3.05	Emulsifying
B	ALKONAT® 1618 C30 P	Cetearyl Alcohol (30/70)	2.50	Consistency Agent
A	Acrylates/C10-30 Alkyl Acrylate Crosspolymer	Acrylates/C10-30 Alkyl Acrylate Crosspolymer	0.40	Viscosity Builder
B	OXISMOOTH® CO	Isoamyl Cocoate	3.00	Green Emollient
B	OXISMOOTH® ST	Isoamyl Palmitate/Stearate	2.00	Green Emollient
A	ALKEST® TW 20	Polysorbate 20	0.50	Solubilizer
C	Aluminum Starch Octenylsuccinate	Aluminum Starch Octenylsuccinate	1.00	Absorbent
c	Rosa Canina Fruit Oil	Rosa Canina Fruit Oil	0.50	Active
c	Alantoin	Alantoin	0.30	Active
D	Fragrance	Perfum	1.50	Active
D	GLYSOLV® EPHL	Phenoxyethanol	1.00	Preservative
D	TRJETANOLAMINA 99 W	Triethanolamine	q.s.p. to pH	pH Adjuster



FUNCTIONALITY: Hydration
TEXTURE/SENSORY: Velvety, Light and Moist

DISCOVER MORE ABOUT OUR SPECIALTY PRODUCT LINE:

SURFONIC® BIO 6000 (Glycolipids): performs outstanding, delivering spreadability and moist feel to the skin.

ALKONT® SSL (Sodium Stearoyl Lactylate): Emulsion stabilizer and viscosity builder, gentle to skin and hair.

OXISMOOTH® CO (Isoamyl Cocoate): An efficient green alternative for silicone as skin and hair conditioning agent.

OXISMOOTH® ST (Isoamyl Palmitate/Stearate): Green emollient with high spreadability and low tack as mineral oil alternative.

WARNING TO USERS

The above formulation is just a suggestion. All information, including the conditions of use of Indorama Ventures' products, should not replace the experimental checks that are essential to ensure and tailor the product for each specific application. It is the responsibility of the final formulator to respect the local legislation and obtain any required authorizations.
 #SR 0921.23



SUMMER

KISSED BY THE SUMMER GLOW

SURFONIC® BIO does not cause acne or comedones and provides formulations with freshness, a dry touch, and lightness for summer days.



FACIAL CARE

Summer Glow Facial Serum

- Non-comedogenic
- Non-acnegenic
- Non stickiness
- Mild and non-irritating formulation



HAIR CARE

Fresh Summer Breeze Shampoo

- Sulfate free
- Daily use - detox
- Care cleansing until cortex
- Facilitates combing
- Mild and clean formulation



SKIN CARE

Refreshing After Sun Gel Lotion

- Non-irritating
- Low tack
- Fast absorption
- Fresh lotion
- Soothes and hydrates skin

KISSED BY THE SUMMER GLOW SUGGESTIVE FORMULATION

Summer Glow Facial Serum

PHASE	COMPONENTS	CHEMICAL DESCRIPTION	% BY WEIGHT	FUNCTION
A	Water	Aqua	q.s.p. to 100	Vehicle
A	Disodium EDTA	Disodium EDTA	0.10	Chelating
A	GLICENAT® 260	Glicereth 26	3.00	Humectant
B	SURFONIC® BIO 6000	Glycolipids	2.00	Surfactant
B	Panthenol	Panthenol	0.50	Active
A	Acrylates/C10-30 Alkyl Acrylate Crosspolymer	Acrylates/C10-30 Alkyl Acrylate Crosspolymer	0.30	Viscosity Builder
C	Hyaluronic Acid	Hyaluronic Acid	1.50	Active
C	Niacinamide	Niacinamide	0.30	Active
C	Allantoin	Allantoin	0.30	Active
B	Fragrance	Parfum	1.50	Perfuming
B	ALKEST® CSO 400 H	PEG-40 Hydrogenated Castor Oil	2.50	Solubilizer
B	OXISMOOTH® CO	Isoamyl Cocoate	0.20	Emollient
B	Caprylyl Glycol (and) Phenoxyethanol	Caprylyl Glycol (and) Phenoxyethanol	1.50	Preservative
D	Sodium Hydroxide	Sodium Hydroxide	0.50	Ph Adjuster
D	Citric Acid (50% sol)	Citric Acid	1.00	Ph Adjuster
A	Hydroxypropyl Starch Phosphate	Hydroxypropyl Starch Phosphate	0.50	Structuring

DISCOVER MORE ABOUT OUR SPECIALTY PRODUCT LINE:

SURFONIC® BIO 6000 (Glycolipids): performs outstanding, delivering quickly absorption, equivalent spreadability, reduced oiliness, no greasy film and natural shine to the skin.

OXISMOOTH® CO (Isoamyl Cocoate): An efficient green alternative for silicone as skin and hair conditioning agent.



FUNCTIONALITY: Hydration

TEXTURE/SENSORY: No Stick, Light and Fresh

WARNING TO USERS

The above formulation is just a suggestion. All information, including the conditions of use of Indorama Ventures' products, should not replace the experimental checks that are essential to ensure and tailor the product for each specific application. It is the responsibility of the final formulator to respect the local legislation and obtain any required authorizations.

#SR 0921.23

KISSED BY THE SUMMER GLOW SUGGESTIVE FORMULATION

Fresh Summer Breeze Shampoo

PHASE	COMPONENTS	CHEMICAL DESCRIPTION	% BY WEIGHT	FUNCTION
A	Water	Aqua	q.s.p. to 100	Vehicle
A	GLICENAT® GC K	Glycerin	2.00	Humectant
B	SURFONIC® BIO 5000	Glycolipids	8.00	Co Surfactant
A	ALKONT® SSL	Sodium Lauroyl Lactylate	0.51	Surfactant
A	OXITAINE® CP 30 APH	Cocoamidopropyl Betaine	10.0	Co Surfactant
B	GLUCOSURF® 100	Decyl Glucoside	6.00	Co Surfactant
B	OXISMOOTH® CO	Isoamyl Cocoate	0.50	Green Emollient
B	ALKEST® CSO 400 H	PEG-40 Hydrogenated Castor Oil	1.50	Solubilizer
B	ALKEST® TW 327	PEG-80 Sorbitan Laurate	1.00	Co Surfactant
D	Hydrolized Wheat Protein	Hydrolized Wheat Protein	1.00	Active
D	Sodium Benzoate	Sodium Benzoate	0.70	Preservative
D	Fragrance	Parfum	1.50	Perfuming
D	OXIFLOW® S 6800	Sorbeth-450 Tristearate (and) Water (and) PEG-9 Cocoate (and) PEG-32 Distearate (and) PEG-175 Distearate	4.29	Rheology modifier

DISCOVER MORE ABOUT OUR SPECIALTY PRODUCT LINE:

SURFONIC® BIO 5000 (Glycolipids): acts as main or co-surfactant promoting mild cleansing until the cortex and facilitates wet hair combing.

ALKONT® SSL (Sodium Stearoyl Lactylate): Emulsion stabilizer and viscosity builder, gentle to skin and hair.

GLUCOSURF® 100 (Decyl Glucoside): Acts as foam stabilizers, providing rich creamy foam during application due to the formation of small homogeneous bubbles.

OXISMOOTH® CO (Isoamyl Cocoate): An efficient green alternative for silicone as skin and hair conditioning agent.

OXIFLOW® S 6800 (Sorbeth-450 Tristearate (and) Water (and) PEG-9 Cocoate (and) PEG-32 Distearate (and) PEG-175 Distearate): efficient thickening of surfactant-based systems, especially salt- and sulfate-free formulations which does not require neutralization.



FUNCTIONALITY: Mild and Efficient Cleansing
TEXTURE/SENSORY: Fresh and Moist

WARNING TO USERS

The above formulation is just a suggestion. All information, including the conditions of use of Indorama Ventures' products, should not replace the experimental checks that are essential to ensure and tailor the product for each specific application. It is the responsibility of the final formulator to respect the local legislation and obtain any required authorizations.
 #SR 0921.23

KISSED BY THE SUMMER GLOW SUGGESTIVE FORMULATION

Refreshing After Sun Gel Lotion

PHASE	COMPONENTS	CHEMICAL DESCRIPTION	% BY WEIGHT	FUNCTION
A	Water	Aqua	q.s.p. to 100	Vehicle
A	Disodium EDTA	Disodium EDTA	0.10	Chelating Agent
A	Acrylates/C10-30 Alkyl Acrylate Crosspolymer	Acrylates/C10-30 Alkyl Acrylate Crosspolymer	0.75	Rheology modifier
A	GLICENAT® 260	Glycereth-26	0.50	Humectant
B	SURFONIC® BIO 5000	Glycolipids	1.00	Surfactant
B	ALKEST® CSO 400 H	PEG-40 Hydrogenated Castor Oil	1.00	Solubilizer
A	Sodium Benzoate	Sodium Benzoate	0.50	Preservative
C	Aloe Barbadensis Leaf Extract	Aloe Barbadensis Leaf Extract	1.00	Active
C	Allantoin	Allantoin	0.30	Active
B	Caprylyl Glycol (And) Phenoxyethanol	Caprylyl Glycol (And) Phenoxyethanol	0.50	Preservative
C	Fragrance	Parfum	0.50	Perfuming

DISCOVER MORE ABOUT OUR SPECIALTY PRODUCT LINE:

SURFONIC® BIO 5000 (Glycolipids): gives a balanced moisturizing effect, promoting a skin hydration over 24 hours, fast absorption, reduced residual stickiness and a velvety sensorial in comparison with common emulsifiers.



FUNCTIONALITY: Care and Hydration
TEXTURE/SENSORY: Fresh, Light and Moist

WARNING TO USERS

The above formulation is just a suggestion. All information, including the conditions of use of Indorama Ventures' products, should not replace the experimental checks that are essential to ensure and tailor the product for each specific application. It is the responsibility of the final formulator to respect the local legislation and obtain any required authorizations.
 #SR 0921.23



AUTUMN

RENEWAL LIKE FALL SEASON

SURFONIC® BIO contains free fatty acids compatible with the skin's natural moisturizing factor and provides low stickiness for autumn days.



FACIAL CARE

Fresh & Nourish Clay Mask

- Renewal glow moist skin
- Non stickiness
- Easy to apply



HAIR CARE

Nutritive Drops Hair Tonic

- Clear light formulation
- Non sticky and Non-Oily feel
- Scalp and hair gentle care
- 100% from vegetable origin



SKIN CARE

Nourishing Bath Foam

- Care and cleansing
- Mild and gentle to skin
- Well-being bath
- Compatible with transparent formulas



RENEWAL LIKE FALL SEASON SUGGESTIVE FORMULATION

Fresh & Nourish Clay Mask

PHASE	COMPONENTS	CHEMICAL DESCRIPTION	% BY WEIGHT	FUNCTION
A	Water	Aqua	q.s.p. to 100	Vehicle
A	Disodium EDTA	Disodium EDTA	0.10	Chelating
A	GLICENAT® 260	Glycereth 26	3.00	Humectant
A	Hydroxypropyl Starch Phosphate	Hydroxypropyl Starch Phosphate	2.00	Structuring
A	Xanthan Gum	Xanthan Gum	0.50	Viscosity builder
A	ALKEST® TW 20	Polysorbate 20	0.50	Emulsifying
B	ALKONAT® CE 200 F	Ceteareth-20	4.00	Emulsifying
B	ALKONAT® 1618 C 30	Cetearyl Alcohol	4.00	Viscosity builder
B	Tocopheryl Acetate	Tocopheryl Acetate	0.50	Active
B	OXISMOOTH® CO	Isoamyl Cocoate	6.00	Emollient
C	Kaolin	Kaolin	20.0	Active
C	Titanium Dioxide	Titanium Dioxide	0.50	Active
A	SURFONIC® BIO 6000	Glycolipids	3.00	Co Surfactant
D	Niacinamide	Niacinamide	0.50	Active
D	Aloe Vera	Aloe Barbadosis Leaf Extract	0.50	Active
D	Fragrance	Parfum	1.50	Perfuming
D	GLYSOLV® EPHL	Phenoxyethanol	1.00	Preservative
E	Sodium Hydroxide	Sodium Hydroxide	q.s.p to pH	pH Adjuster
E	Citric Acid	Citric Acid	q.s.p to pH	pH Adjuster



FUNCTIONALITY: Care and Hydration
TEXTURE/SENSORY: Nourish, Light and Moist

DISCOVER MORE ABOUT OUR SPECIALTY PRODUCT LINE:

OXISMOOTH® CO (Isoamyl Cocoate): An efficient green alternative for silicone as skin and hair conditioning agent.

SURFONIC® BIO 6000 (Glycolipids): performs outstanding, delivering quickly absorption, spreadability, reduced oiliness, no greasy film and natural shine to the skin.

WARNING TO USERS

The above formulation is just a suggestion. All information, including the conditions of use of Indorama Ventures' products, should not replace the experimental checks that are essential to ensure and tailor the product for each specific application. It is the responsibility of the final formulator to respect the local legislation and obtain any required authorizations.
 #SR 0921.23

RENEWAL LIKE FALL SEASON SUGGESTIVE FORMULATION

Nutritive Drops Hair Tonic

PHASE	COMPONENTS	CHEMICAL DESCRIPTION	% BY WEIGHT	FUNCTION
A	Water	Aqua	q.s.p. to 100	Vehicle
A	Ethanol	Ethanol	5.00	Solvent
A	Isopropanol	Isopropanol	5.00	Solvent
A	GLICENAT® 260	Glycerin	1.00	Humectant
B	SURFONIC® BIO 5000	Glycolipids	2.73	Surfactant
A	Panthenol	Panthenol	0.50	Active
A	Niacinamide	Niacinamide	0.30	Active
A	Tocopheryl Acetate	Tocopheryl Acetate	0.00	Active
B	Fragrance	Perfum	1.50	Perfuming
A	Sodium Benzoate	Sodium Benzoate	1.00	Preservative
C	Citric Acid/ Sodium Hydroxide	Citric Acid/ Sodium Hydroxide	q.s.p. to pH	Ph Adjuster

DISCOVER MORE ABOUT OUR SPECIALTY PRODUCT LINE:

SURFONIC® BIO 5000 (Glycolipids): acts as main or co-surfactant that facilitates hair combing promoting balanced hydration.



FUNCTIONALITY: Care and Hydration
TEXTURE/SENSORY: Light and Moist

WARNING TO USERS

The above formulation is just a suggestion. All information, including the conditions of use of Indorama Ventures' products, should not replace the experimental checks that are essential to ensure and tailor the product for each specific application. It is the responsibility of the final formulator to respect the local legislation and obtain any required authorizations.
#SR 0921.23

RENEWAL LIKE FALL SEASON SUGGESTIVE FORMULATION

Nourishing Bath Foam

PHASE	COMPONENTS	CHEMICAL DESCRIPTION	% BY WEIGHT	FUNCTION
A	Water	Water	q.s.p. to 100	Vehicle
A	Disodium EDTA	Disodium EDTA	0.10	Chelating
B	Coconut oil	Coconut Oil	25.0	Emollient
B	OXISMOOTH® CP	Isoamyl Caprylate/Caprata	5.00	Emollient
B	OXISMOOTH® ST	Isoamyl Palmitate/Stearate	5.00	Emollient
A	ALKOPON® 24 S 29	Sodium Lauryl Sulfate	10.0	Surfactant
C	Panthenol	Panthenol	0.50	Active
C	Allantoin	Allantoin	0.20	Active
A	SURFONIC® BIO 5000	Glycolipids	4.54	Surfactant
B	GLUCOSURF® 100	Decyl Glucoside	8.00	Surfactant
A	GLICENAT® GC K	Glycerin	2.00	Emollient
A	Sodium Benzoate	Sodium Benzoate	1.00	Preservative
D	Citric Acid 50%	Citric Acid	q.s.p. to pH	pH adjuster
D	Sodium Hydroxide 50%	Sodium Hydroxide	q.s.p. to pH	pH adjuster

DISCOVER MORE ABOUT OUR SPECIALTY PRODUCT LINE:

OXISMOOTH® CP (Isoamyl Caprylate Caprate): Green emollient with high spreadability, very dry touch and quickly absorption.

OXISMOOTH® ST (Isoamyl Palmitate/Stearate): Green emollient with high spreadability and low tack as mineral oil alternative.

SURFONIC® BIO 5000 (Glycolipids): acts as main or co-surfactant promoting mild cleansing.

GLUCOSURF® 100 (Decyl Glucoside): Acts as foam stabilizers, providing rich creamy foam during application due to the formation of small homogeneous bubbles.



FUNCTIONALITY: Care and Cleansing

TEXTURE/SENSORY: Nourish, Smooth and Moist

WARNING TO USERS

The above formulation is just a suggestion. All information, including the conditions of use of Indorama Ventures' products, should not replace the experimental checks that are essential to ensure and tailor the product for each specific application. It is the responsibility of the final formulator to respect the local legislation and obtain any required authorizations.
#SR 0921.23



WINTER

RENEWAL LIKE FALL SEASON

SURFONIC® BIO respects the skin's microbiota and provides high hydration for up to 24 hours with formulations that offer excellent spreadability for winter days.



FACIAL CARE

Comfy Moist Facial Lotion

- Non-comedogenic
- Non-acnegenic
- Dermatologically tested



HAIR CARE

Peacefulness Conditioner

- High biodegradable
- Low impact to aquatic life
- Natural ingredient



SKIN CARE

Serenity Hydration Body Balm

- EO, PKO and GMO free
- Non-comedogenic
- Non-acnegenic
- Preservative free
- Dermatologically tested

COMFY LIKE WINTER SERENITY SUGGESTIVE FORMULATION

Comfy Moist Facial Lotion

PHASE	COMPONENTS	CHEMICAL DESCRIPTION	% BY WEIGHT	FUNCTION
A	Water	Aqua	q.s.p. to 100	Vehicle
A	GLICENAT® 260	Glicereth 260	2.00	Humectant
A	SURFONIC® BIO 6000	Glycolipids	4.00	Co Surfactant
B	Shea Butter	Butyrospermum Parkii Butter	0.50	Emollient
B	Candelilla Wax	Candelilla Wax	1.00	Emollient
A	ALKONT® SSL	Sodium Lauroyl Lactylate	2.03	Emulsifying
B	ALKONAT® 1618 C30 P	Cetearyl Alcohol (30/70)	4.00	Consistency Agent
A	Acrylates/C10-30 Alkyl Acrylate Crosspolymer	Acrylates/C10-30 Alkyl Acrylate Crosspolymer	0.30	Rheology modifier
B	OXISMOOTH® CO	Isoamyl Cocoate	2.00	Green Emollient
B	OXISMOOTH® ST	Isoamyl Palmitate/Stearate	1.00	Green Emollient
A	ALKEST® TW 20	Polysorbate 20	2.00	Solubilizer
C	Panthenol (pH 9.0 - 10.5)	Panthenol	1.00	Active
C	Hyaluronic Acid	Hyaluronic Acid	1.00	Active
B	Tocopheryl Acetate	Tocopheryl Acetate	0.50	Active
C	Niacinamide	Niacinamide	0.50	Active
C	Aluminum Starch Octenylsuccinate	Aluminum Starch Octenylsuccinate	1.50	Absorbant
A	Hydroxypropyl Starch Phosphate	Hydroxypropyl Starch Phosphate	0.80	Structuring
C	GLYSOLV® EPHL	Phenoxyethanol	1.00	Preservative
C	Fragrance	Perfum	1.50	Perfum
D	TRIETANOLAMINA 99 W	Triethanolamine	q.s.p. to pH	pH Adjuster



FUNCTIONALITY: Care and Hydration
TEXTURE/SENSORY: Soft and Moist

DISCOVER MORE ABOUT OUR SPECIALTY PRODUCT LINE:

SURFONIC® BIO 6000 (Glycolipids): performs outstanding, delivering quickly absorption, spreadability, reduced oiliness, no greasy film and natural shine to the skin.

ALKONT® SSL (Sodium Stearoyl Lactylate): Emulsion stabilizer and viscosity builder, gentle to skin and hair.

OXISMOOTH® CO (Isoamyl Cocoate): An efficient green alternative for silicone as skin and hair conditioning agent.

OXISMOOTH® ST (Isoamyl Palmitate/Stearate): Green emollient with high spreadability and low tack as mineral oil alternative.

WARNING TO USERS

The above formulation is just a suggestion. All information, including the conditions of use of Indorama Ventures' products, should not replace the experimental checks that are essential to ensure and tailor the product for each specific application. It is the responsibility of the final formulator to respect the local legislation and obtain any required authorizations.
[#SR 0921.23](#)

COMFY LIKE WINTER SERENITY SUGGESTIVE FORMULATION

Peacefulness Conditioner

PHASE	COMPONENTS	CHEMICAL DESCRIPTION	% BY WEIGHT	FUNCTION
A	Water	Aqua	q.s.p. to 100	Vehicle
A	GLICENAT® GCK	Glycerin	2.00	Humectant
A	SURFONIC® BIO 6000	Glycolipids	5.00	Surfactant
A	ALKONT® SSL	Sodium Lauroyl Lactylate	0.51	Emulsifying
B	Acrylates/C10-30 Alkyl Acrylate Crosspolymer	Acrylates/C10-30 Alkyl Acrylate Crosspolymer	0.30	Rheology Modifier
B	ALKONAT® CE 200 F	Ceteareth-20	0.80	Emulsifying
A	ALKONAT® 1618 C 30 P	Cetearyl Alcohol	3.00	Viscosity Builder
B	OXISMOOTH® CP	Isoamyl Caprylate/Caprate	1.00	Green Emollient
B	OXISMOOTH® ST	Isoamyl Palmitate/Stearate	0.30	Green Emollient
C	Aloe Barbadensis Leaf Extract	Aloe Barbadensis Leaf Extract	0.20	Active
C	Sodium Benzoate	Sodium Benzoate	0.50	Preservative
C	Fragrance	Perfum	1.50	Perfuming
D	TRJETANOLAMINA 99 W	Triethanolamine	q.s.p. to pH	pH Adjuster

DISCOVER MORE ABOUT OUR SPECIALTY PRODUCT LINE:

SURFONIC® BIO 6000 (Glycolipids): plays a crucial role in hair conditioners allowing cationic conditioning agent replacement with equivalent performance and improved sustainability profile.

ALKONT® SSL (Sodium Stearoyl Lactylate): Emulsion stabilizer and viscosity builder, gentle to skin and hair.

OXISMOOTH® CP (Isoamyl Caprylate Caprate): Green emollient with high spreadability, very dry touch and quickly absorption.

OXISMOOTH® ST (Isoamyl Palmitate/Stearate): Green emollient with high spreadability and low tack as mineral oil alternative.



FUNCTIONALITY: Care and Hydration

TEXTURE/SENSORY: Light, Soft and Moist

WARNING TO USERS

The above formulation is just a suggestion. All information, including the conditions of use of Indorama Ventures' products, should not replace the experimental checks that are essential to ensure and tailor the product for each specific application. It is the responsibility of the final formulator to respect the local legislation and obtain any required authorizations.
#SR 0921.23

COMFY LIKE WINTER SERENITY SUGGESTIVE FORMULATION

Serenity Hydration Body Balm

PHASE	COMPONENTS	CHEMICAL DESCRIPTION	% BY WEIGHT	FUNCTION
A	Water	Aqua	q.s.p. to 100	Vehicle
A	Disodium EDTA	Disodium EDTA	0.10	Chelating Agent
A	Acrylates/C10-30 Alkyl Acrylate Crosspolymer	Acrylates/C10-30 Alkyl Acrylate Crosspolymer	1.00	Viscosity Builder
A	GLICENAT® 260	Glycereth-26	3.00	Humectant
B	SURFONIC® BIO 5000	Glycolipids	1.40	Surfactant
B	ALKEST TW® 20	Polysorbate 20	0.30	Solubilizer
B	ALKEST® CSO 400 H	PEG-40 Hydrogenated Castor Oil	1.50	Solubilizer
B	OXISMOOTH® ST	Isoamyl Stearate	0.30	Emollient
B	OXISMOOTH® CO	Isoamyl Cocoate	1.00	Green Emollient
A	Sodium Benzoate	Sodium Benzoate	0.50	Preservative
B	ALKOMOL® E 10	PPG-15 Stearyl Ether	0.30	Emollient
B	Tocopheryl Acetate	Tocopheryl Acetate	0.50	Active
B	Almond Oil	Prunus Amygdalus Dulcis Oil	0.20	Active
A	Hydroxypropyl Starch Phosphate	Hydroxypropyl Starch Phosphate	1.00	Structuring
C	Fragrance	Perfum	1.50	Perfuming
C	GLYSOLV® EPHL	Phenoxyethanol	0.50	Preservative
C	TRIETANOLAMINA 99 W	Triethanolamine	q.s.p. to pH	Ph Adjuster



FUNCTIONALITY: Care and Hydration

TEXTURE/SENSORY: Light, No Stick, Soft and Moist

DISCOVER MORE ABOUT OUR SPECIALTY PRODUCT LINE:

SURFONIC® BIO 5000 (Glycolipids): gives a balanced moisturizing effect, promoting a skin hydration over 24 hours, fast absorption, reduced residual stickiness and a velvety sensorial in comparison with common emulsifiers.

OXISMOOTH® CO (Isoamyl Cocoate): An efficient green alternative for silicone as skin and hair conditioning agent.

OXISMOOTH® ST (Isoamyl Palmitate/Stearate): Green emollient with high spreadability and low tack as mineral oil alternative.

WARNING TO USERS

The above formulation is just a suggestion. All information, including the conditions of use of Indorama Ventures' products, should not replace the experimental checks that are essential to ensure and tailor the product for each specific application. It is the responsibility of the final formulator to respect the local legislation and obtain any required authorizations.
#SR 0921.23

RECHARGE YOURSELF



RECHARGE YOURSELF

HYMALAIA BATH SALT

PHASE	COMPONENTS	CHEMICAL DESCRIPTION	% BY WEIGHT	FUNCTION
C	Rough Salt	Sodium Chloride	87.8	Vehicle
A	GLUCOSURF® 100	Decyl Glucoside	8.00	Surfactant
B	OXISMOOTH® ST	Isoamyl Palmitate/Stearate	5.00	Green Emollient
B	OXISMOOTH® CO	Isoamyl Cocoate	3.00	Green Emollient
B	Fragrance	Parfum	0.20	Perfuming



DISCOVER MORE ABOUT OUR SPECIALTY PRODUCT LINE:

OXISMOOTH® CO (Isoamyl Cocoate): An efficient green alternative for silicone as skin and hair conditioning agent.

OXISMOOTH® ST (Isoamyl Palmitate/Stearate): Green emollient with high spreadability and low tack as mineral oil alternative.

GLUCOSURF® 100 (Decyl Glucoside): Acts as foam stabilizers, providing rich creamy foam during application due to the formation of small homogeneous bubbles.

PROCEDURE

PHASE A

Adjust the pH of **GLUCOSURF® 100** to the pH range between 6 - 7.

PHASE B

Add **OXISMOOTH® CO**, **OXISMOOTH® ST** and Fragrance.

PHASE C

Add salt and mix all the ingredients together.

Extra

Add 40g of the mixture to the water-soluble film and seal it with the heat sealer.

WARNING TO USERS

The above formulation is just a suggestion. All information, including the conditions of use of Indorama Ventures' products, should not replace the experimental checks that are essential to ensure and tailor the product for each specific application. It is the responsibility of the final formulator to respect the local legislation and obtain any required authorizations.
#SR 2110.24

RECHARGE YOURSELF

SHAVING COCONUT FOAM

PHASE	COMPONENTS	CHEMICAL DESCRIPTION	% BY WEIGHT	FUNCTION
A	Deionized Water	Aqua	53.5	Vehicle
A	Disodium EDTA	Disodium EDTA	0.10	Chelating Agent
B	Coconut oil	Coconut oil	30.0	Emollient
B	OXISMOOTH® ST	Isoamyl Cocoate	5.00	Green Emollient
A	ALKOPON® 24 1S 70	Sodium Laureth Sulfate	7.00	Surfactant
B	GLUCOSURF® 100	Decyl Glucoside	8.00	Co Surfactant
A	GLICENAT® GC K	Glycerin	2.00	Emollient
A	Sodium benzoate	Sodium benzoate	0.50	Preservative

DISCOVER MORE ABOUT OUR SPECIALTY PRODUCT LINE:

OXISMOOTH® ST (Isoamyl Palmitate/Stearate): Green emollient with high spreadability and low tack as mineral oil alternative.

GLUCOSURF® 100 (Decyl Glucoside): Acts as foam stabilizers, providing rich creamy foam during application due to the formation of small homogeneous bubbles.



PROCEDURE

PHASE A

In the main vessel, add the water, EDTA, and Sodium Benzoate, homogenize, then add the **GLICENAT® GC K**. Then, add **ALKOPON® 24 1S 70** and keep mixing.

PHASE B

In other vessel mix all the phase B ingredients. Pour phase B into phase A under slow stirring. Homogenize. Adjust the pH.

WARNING TO USERS

The above formulation is just a suggestion. All information, including the conditions of use of Indorama Ventures' products, should not replace the experimental checks that are essential to ensure and tailor the product for each specific application. It is the responsibility of the final formulator to respect the local legislation and obtain any required authorizations.
#SR 2110.24

RECHARGE YOURSELF

SINGLE DOSE CONDITIONER

PHASE	COMPONENTS	CHEMICAL DESCRIPTION	% BY WEIGHT	FUNCTION
A	ALKONAT® 1698 P	Cetyl alcohol	20.0	Consistency Agent
A	Behemtrimonium Chloride	Behemtrimonium Chloride	1.30	Conditioning Agent
A	GLICENAT® GC K	Glycerin	2.00	Umectant
A	ALKONT® SSL	Sodium Lauroyl Lactylate	3.60	Emulsifier
A	GLICEPOL® GMS 163	Glyceryl Stearate	2.50	Emulsifier
A	COCONUT OIL	Coconut oil	48.0	Conditioning Agent
A	KARITÉ BUTTER	Butyrospermum Parkii Butter	23.0	Conditioning Agent

DISCOVER MORE ABOUT OUR SPECIALTY PRODUCT LINE:

ALKONT® SSL (Sodium Stearoyl Lactylate): Emulsion stabilizer and viscosity builder, gentle to skin and hair.



PROCEDURE

PHASE A

Melt the solid ingredients and add the others under stirring.

WARNING TO USERS

The above formulation is just a suggestion. All information, including the conditions of use of Indorama Ventures' products, should not replace the experimental checks that are essential to ensure and tailor the product for each specific application. It is the responsibility of the final formulator to respect the local legislation and obtain any required authorizations.
#SR 2110.24

RECHARGE YOURSELF

CLEAR MOIST SHAMPOO

PHASE	COMPONENTS	CHEMICAL DESCRIPTION	% BY WEIGHT	FUNCTION
A	Deionized Water	Aqua	q.s.p to 100	Vehicle
A	Disodium EDTA	Disodium EDTA	0.10	Chelating
A	Panthenol	Panthenol	0.20	Hair Conditioning
A	ALKOPON® CN	Sodium Laureth Sulfate	13.6	Primary Surfactant
A	OXITAINE® CP 30 APH	Cocamidopropyl Betaine	8.27	Co-Surfactant
A	GLICENAT® GC K	Glycerin	0.50	Humectant
B	OXISENSE® S 0440	PEG-4/PEG-6/PEG-7/PEG-8 (and) Castor Oil Hydrogenated Ethoxylated (and) Water	2.11	Conditioning Booster
B	ALKONAT® L 70	Laureth-7	2.00	Solubilizer
B	OXISMOOTH® CO	Isoamyl Cocoate	0.50	Emollient
B	OXISMOOTH® ST	Isoamyl Palmitate/Stearate	0.50	Emollient
C	Sodium Benzoate	Sodium Benzoate	0.50	Preservative
D	Fragrance	Parfum	1.00	Perfuming
E	OXIFLOW® S 6800	Sorbeth-450 Tristearate (and) Water (and) PEG-9 Cocoate (and) PEG-32 Distearate (and) PEG-175 Distearate	4.29	Rheology Modifier
C	Sodium Hydroxide	Sodium Hydroxide	qsp pH 4.6 - 4.9	pH Adjuster
C	Citric Acid	Citric Acid	qsp pH 4.6 - 4.9	pH Adjuster

DISCOVER MORE ABOUT OUR SPECIALTY PRODUCT LINE:

OXISMOOTH® CO (Isoamyl Cocoate): An efficient green alternative for silicone as skin and hair conditioning agent.

OXISMOOTH® ST (Isoamyl Palmitate/Stearate): Green emollient with high spreadability and low tack as mineral oil alternative.

OXISENSE® S 0440 (PEG-4/PEG-6/PEG-7/PEG-8 (and) Castor Oil Hydrogenated Ethoxylated (and) Water): Conditioning agent for hair care products that promotes frizz control.



PROCEDURE

PHASE A

Add EDTA to the water and homogenize. Add remaining ingredients of phase A and homogenize under moderate agitation to avoid excess of foaming.

PHASE B

In an auxiliary vessel, add components of phase B and homogenize under agitation until emollients are completely solubilized. Incorporate phase B to phase A.

PHASE C

Adjust pH with citric acid and/or sodium hydroxide and incorporate the preservative.

PHASE D and E

Add fragrance and homogenize. Slowly incorporate phase E, keeping the agitation until completely solubilized. Check pH at the end of preparation.

WARNING TO USERS

The above formulation is just a suggestion. All information, including the conditions of use of Indorama Ventures' products, should not replace the experimental checks that are essential to ensure and tailor the product for each specific application. It is the responsibility of the final formulator to respect the local legislation and obtain any required authorizations.
#SR 2110.24

RECHARGE YOURSELF

CO-WASH CONDITIONER

PHASE	COMPONENTS	CHEMICAL DESCRIPTION	% BY WEIGHT	FUNCTION
A	Deionized Water	Aqua	q.s.p to 100	Vehicle
A	Disodium EDTA	Disodium EDTA	0.10	Chelating
A	OXITAINE® CP 30 APH	Cocamidopropyl Betaine	16.6	Surfactant
A	GLUCOSURF 100	Decyl Glucoside	10.0	Surfactant
A	Cetrimonium Chloride (50%)	Cetrimonium Chloride	1.00	Surfactant
B	OXISENSE® S 0440	PEG-4/PEG-6/PEG-7/PEG-8 (and) Castor Oil Hydrogenated Ethoxylated (and) Water	2.11	Conditioning Agent
B	Fragrance	Parfum	1.00	Perfuming
C	Sodium Benzoate	Sodium Benzoate	1.00	Preservative
D	OXIFLOW® S 6800	Sorbeth-450 Tristearate (and) Water (and) PEG-9 Cocoate (and) PEG-32 Distearate (and) PEG-175 Distearate	2.14	Rheology Modifier
C	Sodium Hydroxide	Sodium Hydroxide	qsp pH 4.6 - 4.9	pH Adjuster
C	Citric Acid	Citric Acid	qsp pH 4.6 - 4.9	pH Adjuster

DISCOVER MORE ABOUT OUR SPECIALTY PRODUCT LINE:

OXISENSE® S 0440 (PEG-4/PEG-6/PEG-7/PEG-8 (and) Castor Oil Hydrogenated Ethoxylated (and) Water): Conditioning agent for hair care products that promotes frizz control.

OXIFLOW® S 6800 (Sorbeth-450 Tristearate (and) Water (and) PEG-9 Cocoate (and) PEG-32 Distearate (and) PEG-175 Distearate): efficient thickening of surfactant-based systems, especially salt- and sulfate-free formulations which does not require neutralization.



PROCEDURE

PHASE A

Add EDTA to the water and homogenize. Incorporate OXITAINE® CP 30 APH, NEOMINOX® LA 4230 and Cetrimonium chloride, in this order. Homogenize under moderate agitation.

PHASE B

In a separate vessel, pre-mix OXISENSE® S 0440 with fragrance. Add to Phase A and homogenize until the formula is completely clear.

PHASE C

Adjust pH with citric acid and/or sodium hydroxide and incorporate the preservative.

PHASE D

Adjust viscosity, slowly incorporating OXIFLOW® S 6800 under agitation until completely solubilized. Check pH at the end of preparation.

WARNING TO USERS

The above formulation is just a suggestion. All information, including the conditions of use of Indorama Ventures' products, should not replace the experimental checks that are essential to ensure and tailor the product for each specific application. It is the responsibility of the final formulator to respect the local legislation and obtain any required authorizations.
#SR 2110.24

RECHARGE YOURSELF

RESCUE REPAIR HAIR MASK

PHASE	COMPONENTS	CHEMICAL DESCRIPTION	% BY WEIGHT	FUNCTION
B	Deionized Water	Water	q.s.p to 100	Vehicle
B	Behentrimonium Chloride	Behentrimonium Chloride	1.50	Cationic Surfactant
B	GLICENAT® GC K	Glycerin	0.20	Humectant
A	ALKONAT® 1618 C30 P	Cetearyl Alcohol	8.00	Consistency Agent
A	ALKEST® SP 20	Sorbitan Laurate	0.40	Emulsifier
A	OXISMOOTH® CO	Isoamyl Cocoate	1.00	Emollient
C	OXISENSE® R 1051	Castor Oil Hydrogenated Ethoxylated (and) Ceteareth-80 (and) Polyquaternium-10 (and) Polyquaternium-51	3.33	Hair Conditioning
C	Aloe Barbadensis Leaf Extract	Aloe Barbadensis Leaf Extract	1.00	Humectant
C	Hydrolyzed Wheat Protein	Hydrolyzed Wheat Protein	0.50	Hair Conditioning
C	Sodium Benzoate	Sodium Benzoate (and) Potassium Sorbate	0.50	Preservative
C	Fragrance	Parfum	0.60	Perfuming
C	Sodium Hydroxide	Sodium Hydroxide	qsp pH 4.6 - 4.9	pH Adjuster
C	Citric Acid	Citric Acid	qsp pH 4.6 - 4.9	pH Adjuster

DISCOVER MORE ABOUT OUR SPECIALTY PRODUCT LINE:

OXISMOOTH® CO (Isoamyl Cocoate): An efficient green alternative for silicone as skin and hair conditioning agent.

OXISENSE® R 1051 (Castor Oil Hydrogenated Ethoxylated (and) Ceteareth-80 (and) Polyquaternium-10 (and) Polyquaternium-51): Conditioning booster for damaged hair repair and protection.



PROCEDURE

PHASE A

Melt and homogenize ALKONAT® 1618 C30 P, ALKEST® SP 20 and OXISMOOTH® CO at 70 °C.

PHASE B

Heat the water at 70 °C, Behentrimonium Chloride and GLICENAT® GC K.

PHASE C

Pour Phase A to Phase B under stirring at 70 °C till complete mixture of phases. Cool down to room temperature and finalize with Aloe Vera Extract, Hydrolysed Protein, preservative system and fragrance. Adjust pH with citric acid and/or sodium hydroxide.

WARNING TO USERS

The above formulation is just a suggestion. All information, including the conditions of use of Indorama Ventures' products, should not replace the experimental checks that are essential to ensure and tailor the product for each specific application. It is the responsibility of the final formulator to respect the local legislation and obtain any required authorizations.
#SR 2110.24

RECHARGE YOURSELF

SOLID CONDITIONER

PHASE	COMPONENTS	CHEMICAL DESCRIPTION	% BY WEIGHT	FUNCTION
A	Behentrimonium Methosulfate (and) Cetearyl Alcohol	Behentrimonium Methosulfate (and) Cetearyl Alcohol	46.0	Antistatic, Hair Conditioning
A	ALKONAT® 1698 P	Cetyl Alcohol	26.5	Consistency Agent
A	Butyrospermum Parkii Butter	Butyrospermum Parkii Butter	10.0	Emollient
A	GLICENAT® GC K	Glycerin	8.50	Humectant
A	OXISMOOTH® CP	Isoamyl Caprylate/Caprata	2.00	Emollient
A	OXISMOOTH® CO	Isoamyl Cocoate	2.00	Emollient
B	Tocopheryl Acetate	Tocopheryl Acetate	1.00	Antioxidant
B	Phenoxyethanol (and) Caprylyl Glycol	Phenoxyethanol (and) Caprylyl Glycol	1.00	Preservative
B	Fragrance	Parfum	3.00	Perfuming
A	Citric Acid (50% solution)	Citric Acid	qsp pH 4.0 - 4.5	pH Adjuster

DISCOVER MORE ABOUT OUR SPECIALTY PRODUCT LINE:

OXISMOOTH® CP (Isoamyl Caprylate Caprate): Green emollient with high spreadability, very dry touch and quickly absorption.

OXISMOOTH® CO (Isoamyl Cocoate): An efficient green alternative for silicone as skin and hair conditioning agent.



PROCEDURE

PHASE A

Combine, melt and homogenize all ingredients. Measure the pH of the sample, by preparing a 10% solution in deionized water. Adjust the pH if necessary, with citric acid.

PHASE B

Cool and add ingredients of phase B. Pour liquid while still hot into a silicone mold and allow to cool.

WARNING TO USERS

The above formulation is just a suggestion. All information, including the conditions of use of Indorama Ventures' products, should not replace the experimental checks that are essential to ensure and tailor the product for each specific application. It is the responsibility of the final formulator to respect the local legislation and obtain any required authorizations.
#SR 2110.24

RECHARGE YOURSELF

SOLID SHAMPOO

PHASE	COMPONENTS	CHEMICAL DESCRIPTION	% BY WEIGHT	FUNCTION
A	ALKOPON® NS ECO 92 N	Sodium Lauryl Sulfate	46.0	Surfactant
A	ALKONAT® 1698 P	Cetyl Alcohol	21.0	Consistency Agent
A	GLICENAT® GC K	Glycerin	8.00	Humectant
A	GLUCOSURF® 100	Decyl Glucoside	10.0	Surfactant
A	OXISMOOTH® CP	Isoamyl Caprylate/Caprata	4.00	Emollient
A	Kaolin	Kaolin	3.00	Absorbent
B	Tocopheryl Acetate	Tocopheryl Acetate	1.00	Antioxidant
B	Phenoxyethanol (and) Caprylyl Glycol	Phenoxyethanol (and) Caprylyl Glycol	1.00	Preservative
B	Fragrance	Parfum	3.00	Perfuming

DISCOVER MORE ABOUT OUR SPECIALTY PRODUCT LINE:

OXISMOOTH® CP (Isoamyl Caprylate Caprate): Green emollient with high spreadability, very dry touch and quickly absorption.

GLUCOSURF® 100 (Decyl Glucoside): Acts as foam stabilizers, providing rich creamy foam during application due to the formation of small homogeneous bubbles.



PROCEDURE

PHASE A

Combine, melt and homogenize all ingredients.

PHASE B

Start cooling. Add ingredients of phase B. Pour liquid while still hot into a silicone mold and allow to cool.

WARNING TO USERS

The above formulation is just a suggestion. All information, including the conditions of use of Indorama Ventures' products, should not replace the experimental checks that are essential to ensure and tailor the product for each specific application. It is the responsibility of the final formulator to respect the local legislation and obtain any required authorizations.
#SR 2110.24

RECHARGE YOURSELF

CUTICLE SERUM

PHASE	COMPONENTS	CHEMICAL DESCRIPTION	% BY WEIGHT	FUNCTION
A	Deionized Water	Aqua	q.s.p. to 100	Vehicle
A	Disodium EDTA	Disodium Edta	0.10	Chelating
A	GLICENAT® GC K	Glycerin	0.50	Humectant
A	ULTRAPEG® 400	Peg-8	0.50	Humectant
B	ALKEST® CSO 400 H	Peg-40 Hydrogenated Castor Oil	5.00	Solubilizing
B	OXISMOOTH® CP	Isoamyl Caprylate/Caprata	0.10	Emollient
B	Aloe Vera	Aloe Barbadensis Leaf Extract	0.30	Skin Conditioning
B	Panthenol	Panthenol	0.30	Skin Conditioning
B	Tea Tree Oil	Melaleuca Alternifolia (Tea Tree) Leaf Oil	0.20	Skin Conditioning
C	Phenoxyethanol (and) Caprylyl Glycol	Phenoxyethanol (And) Caprylyl Glycol	0.50	Preservative
D	Sodium Hydroxide (50% sol)	Sodium Hydroxide	q.s.p. pH 6.0 - 6.5	pH Adjuster
D	Citric Acid (50% sol)	Citric Acid	q.s.p. pH 6.0 - 6.5	pH Adjuster

DISCOVER MORE ABOUT OUR SPECIALTY PRODUCT LINE:

OXISMOOTH® CP (Isoamyl Caprylate Caprate): Green emollient with high spreadability, very dry touch and quickly absorption.



PROCEDURE

PHASE A

Solubilize EDTA in the water, and then add GLICENAT® GC K, ULTRAPEG® 400, Panthenol and Aloe Vera. Homogenize.

PHASE B

In another vessel solubilize Tea Tree Oil with ALKEST® CSO 400 H and OXISMOOTH® CP. Incorporate phase A to phase B under agitation.

PHASE C and D

Incorporate the preservative. Adjust pH to range 6.0 – 6.5 with Citric Acid and/or Sodium Hydroxide if necessary.

WARNING TO USERS

The above formulation is just a suggestion. All information, including the conditions of use of Indorama Ventures' products, should not replace the experimental checks that are essential to ensure and tailor the product for each specific application. It is the responsibility of the final formulator to respect the local legislation and obtain any required authorizations.
#SR 2110.24

INSTANT MAKEUP BRUSH CLEANER



RECHARGE YOURSELF

BRUSH INSTANT CLEANER

PHASE	COMPONENTS	CHEMICAL DESCRIPTION	% BY WEIGHT	FUNCTION
A	Deionized Water	Aqua	q.s.p to 100	Vehicle
A	GLUCOSURF® 100	Decyl Glucoside	4.00	Co Surfactant
A	Ethanol	Ethanol	5.00	Solvent
A	GLICENAT® 260	Glycereth-26	0.50	Humectant
A	SURFONIC® BIO 5000	Glycolipids	2.73	Biosurfactant
A	SURFONIC® BIO 6000	Glycolipids	2.73	Biosurfactant
A	Hydrolyzed Wheat Protein	Hydrolyzed Wheat Protein	0.30	Hair Conditioning
A	Cetrimonium Chloride	Cetrimonium Chloride	0.40	Hair Conditioning
A	GLYSOLV® EPHL	Phenoxyethanol	0.50	Preservative
A	Sodium Benzoate	Sodium Benzoate	0.50	Preservative
A	Fragrance	Parfum	2.00	Perfuming

DISCOVER MORE ABOUT OUR SPECIALTY PRODUCT LINE:

GLUCOSURF® 100 (Decyl Glucoside): Acts as foam stabilizers, mild to skin and eye.

SURFONIC® BIO 5000 (Glycolipids): acts as main or co-surfactant promoting mild and efficient cleansing.

SURFONIC® BIO 6000 (Glycolipids): performs outstanding, delivering spreadability and moist feel to the makeup brush.



PROCEDURE

PHASE A

Add and mix all ingredients in the order. Adjust the pH to the range.

WARNING TO USERS

The above formulation is just a suggestion. All information, including the conditions of use of Indorama Ventures' products, should not replace the experimental checks that are essential to ensure and tailor the product for each specific application. It is the responsibility of the final formulator to respect the local legislation and obtain any required authorizations.
#SR 2110.24

DAILY CARE

A top-down view of various skincare products scattered on a teal background. The products include several open jars of cream in different shades (white, light green, pink), several tubes of cream or lotion in white and brown packaging, and a few bottles, including a large white spray bottle and a smaller white bottle with a dropper. The products are arranged in a casual, overlapping manner.

DAILY CARE

INDORAMA VENTURES PRESENTS
A SOLUTION FOR EMPOWERMENT:
a daily skin care routine with
SURFONIC® BIO that **VALUES SKIN**
DIVERSITY and **WELLNESS SENSORY**



CLEANSING BALM

Hydrating Makeup Removal

SUGGESTIVE FORMULATION

PHASE	COMPONENTS	CHEMICAL DESCRIPTION	% BY WEIGHT	FUNCTION
A	Glyceryl Stearate	Glyceryl Stearate	23.00	Emollient, Structure Agent
A	Shea Butter	Butyrospermum Parkii Butter	22.00	Emollient, Structure Agent
A	OXISMOOTH® CO	Isoamyl Cocoate	10.00	Emollient
A	OXISMOOTH® ST	Isoamyl Palmitate/Stearate	10.00	Emollient
A	ALKONAT® 1698 P	Cetyl Alcohol	8.00	Consistency Agent
A	SURFONIC® BIO 6000	Glycolipids	10.00	Biosurfactant
A	ULTRARIC® PE 64	Poloxamer 184	15.00	Surfactant
A	Tocopheryl Acetate	Tocopheryl Acetate	0.50	Antioxidant
A	BHT	BHT	0.20	Antioxidant
A	Phenoxyethanol	Phenoxyethanol	0.50	Preservative
B	Fragrance	Parfum	0.80	Perfuming

*Others – pH regulators, thickeners, preservatives, dyes and fragrance.

DISCOVER MORE ABOUT OUR SPECIALTY PRODUCT LINE:

SURFONIC® BIO 6000 (Glycolipids): acts as main or co-surfactant promoting mild cleansing performs outstanding, delivering spreadability and moist feel to the skin.

OXISMOOTH® CO (Isoamyl Cocoate): An efficient green alternative for silicone as skin and hair conditioning agent.

OXISMOOTH® ST (Isoamyl Palmitate/Stearate): Green emollient with high spreadability and low tack as mineral oil alternative.



PROCEDURE

PHASE A

Under agitation and heating at 65°C, incorporate all ingredients.

PHASE B

When the formulation reach less than 40°C, add the fragrance and stir it.

WARNING TO USERS

The above formulation is just a suggestion. All information, including the conditions of use of IVL's products, should not replace the experimental checks that are essential to ensure and tailor the product for each specific application. It is the responsibility of the final formulator to respect the local legislation and obtain any required authorizations.

#SR 0921.23

MICELLAR WATER

Refresh Micellar Cleanser

SUGGESTIVE FORMULATION

PHASE	COMPONENTS	CHEMICAL DESCRIPTION	% BY WEIGHT	FUNCTION
A	Deionized Water	Aqua (Water)	q.s. to 100	Vehicle
A	Disodium EDTA	Disodium Edta	0.50	Chelating
B	SURFONIC® BIO 6000	Glycolipids	8.33	Surfactant
B	ULTRARIC® PE 64	Poloxamer 184	1.00	Surfactant
B	OXIPURITY® 1000 U GC	Glycerin	1.00	Emollient
C	Fragrance	Parfum	q.s.	Fragrance
C	Phenoxyethanol	Phenoxyethanol	0.5	Preservative
C	Citric Acid	Citric Acid	q.s.p. to pH	pH Adjuster

*Others – pH regulators, thickeners, preservatives, dyes and fragrance.

DISCOVER MORE ABOUT OUR SPECIALTY PRODUCT LINE:

SURFONIC® BIO 6000 (Glycolipids): acts as main or co-surfactant promoting mild cleansing performs outstanding, delivering spreadability and moist feel to the skin.



PROCEDURE

PHASE A

Add EDTA to water.

PHASE B

Combine ingredients of Phase B and pour over Phase A slowly and continuously, under agitation. (Check pH)

PHASE C

Adjust pH with Phase C.

WARNING TO USERS

The above formulation is just a suggestion. All information, including the conditions of use of IVL's products, should not replace the experimental checks that are essential to ensure and tailor the product for each specific application. It is the responsibility of the final formulator to respect the local legislation and obtain any required authorizations..

#SR 0975/23

FACIAL FOAM

Natural Breeze Facial Cleansing Foam

SUGGESTIVE FORMULATION

PHASE	COMPONENTS	CHEMICAL DESCRIPTION	% BY WEIGHT	FUNCTION
A	Deionized Water	Aqua (Water)	q.s. to 100	Solvent
A	Dissodium EDTA	Dissodium EDTA	0.50	Chelating
A	GLUCOSURF® 100	Decyl Glucoside	20.00	Surfactant
A	OXITAINE® CP 30 APH	Cocoamidropropyl Betaine	16.66	Co-Surfactant
A	SURFONIC® BIO 5000	Glycolipids	5.00	Biosurfactant
A	OXIPURITY® 1000 U GC	Glycerin	2.00	Humectant
A	Fragrance	Parfum	0.80	Perfuming
A	Phenoxyethanol	Phenoxyethanol	0.50	Preservative
A	Citric Acid	Citric acid	q.s.p. to pH	pH Adjuster

*Others – pH regulators, thickeners, preservatives, dyes and fragrance.

DISCOVER MORE ABOUT OUR SPECIALTY PRODUCT LINE:

SURFONIC® BIO 5000 (Glycolipids): acts as main or co-surfactant promoting mild cleansing.

GLUCOSURF® 100 (Decyl Glucoside): Acts as foam stabilizers, providing rich creamy foam during application due to the formation of small homogeneous bubbles.



PROCEDURE

PHASE A

Incorporate all ingredients, under agitation.

WARNING TO USERS

The above formulation is just a suggestion. All information, including the conditions of use of IVL's products, should not replace the experimental checks that are essential to ensure and tailor the product for each specific application. It is the responsibility of the final formulator to respect the local legislation and obtain any required authorizations.

#SR 0587.23

FACIAL SERUM

Light and Fresh Hydration Serum

SUGGESTIVE FORMULATION

PHASE	COMPONENTS	CHEMICAL DESCRIPTION	% BY WEIGHT	FUNCTION
A	Deionized Water	Aqua (Water)	q.s. to 100	Solvent
A	OXIPURITY® 1000 U GC	Glycerin	3.00	Humectant
A	ULTRAPEG® 400	PEG-8	2.00	Humectant
A	SURFONIC® BIO 6000	Glycolipids	0.25	Biosurfactant
A	Panthenol	Panthenol	0.50	Skin Conditioner
A	Xanthan Gum	Xanthan Gum	0.30	Thickener
A	Hyaluronic Acid	Hyaluronic Acid	3.00	Humectant
A	Niacinamide	Niacinamide	0.20	Smoothing
B	Fragrance	Parfum	0.30	Perfuming
B	ALKEST® CSO 400 H	PEG-40 Hydrogenated Castor Oil	0.30	Solubilizing
C	Phenoxyethanol (and) Caprylyl Glycol	Phenoxyethanol (and) Caprylyl Glycol	0.80	Preservative
C	Sodium Hydroxide	Sodium Hydroxide	q.s.p. to pH	pH Adjuster
C	Citric Acid	Citric Acid	q.s.p. to pH	pH Adjuster

*Others – pH regulators, thickeners, preservatives, dyes and fragrance.

DISCOVER MORE ABOUT OUR SPECIALTY PRODUCT LINE:

SURFONIC® BIO 6000 (Glycolipids): performs outstanding, delivering quickly absorption, equivalent spreadability, reduced oiliness, no greasy film and natural shine to the skin.



PROCEDURE

PHASE A

Disperse and solubilize the gum completely in water. Add remaining ingredients of Phase A and homogenize under moderate agitation to avoid foaming excess.

PHASE B

In an auxiliary vessel, add Phase B components and homogenize under agitation. Incorporate Phase B to Phase A.

PHASE C

Adjust pH with citric acid and/or sodium hydroxide and incorporate the preservative. Check pH at the end of preparation.

WARNING TO USERS

The above formulation is just a suggestion. All information, including the conditions of use of IVL's products, should not replace the experimental checks that are essential to ensure and tailor the product for each specific application. It is the responsibility of the final formulator to respect the local legislation and obtain any required authorizations.

#SR 0975.23

FACIAL LOTION

Light and Fresh Facial Hydration Lotion

SUGGESTIVE FORMULATION

PHASE	COMPONENTS	CHEMICAL DESCRIPTION	% BY WEIGHT	FUNCTION
A	Deionized Water	Aqua (Water)	82.70	Vehicle
A	Disodium EDTA	Disodium EDTA	0.10	Chelating
A	Acrylates Copolymer	Acrylates Copolymer	3.50	Rheology Modifier / Stabilizer
A	SURFONIC® BIO 6000	Glycolipids	1.40	Biosurfactant
B	OXISMOOTH® CP	Isoamyl Caprylate/Caprato	2.00	Emollient
B	OXISMOOTH® ST	Isoamyl Palmitate/Stearate	1.50	Emollient
B	ALKONAT® CE 200 F	Cetareth-20	0.90	Emulsifying
B	ALKONAT® E 20	Steareth-2	2.90	Emulsifying
B	ALKONAT® 1618 C30 P	Cetearyl Alcohol	3.00	Rheology Modifier / Stabilizer
C	Fragrance	Parfum	1.00	Perfuming
C	Phenoxyethanol (And) Caprylyl Glycol	Phenoxyethanol (And) Caprylyl Glycol	1.00	Preservative
A/D	Sodium Hydroxide	Sodium Hydroxide	q.s.p. to pH	pH Adjuster
D	Citric Acid	Citric Acid	q.s.p. to pH	pH Adjuster

*Others – pH regulators, thickeners, preservatives, dyes and fragrance.

DISCOVER MORE ABOUT OUR SPECIALTY PRODUCT LINE:

SURFONIC® BIO 6000 (Glycolipids): performs outstanding, delivering quickly absorption, equivalent spreadability, reduced oiliness, no greasy film and natural shine to the skin.

OXISMOOTH® CP (Isoamyl Caprylate Caprate): Green emollient with high spreadability, very dry touch and quickly absorption.

OXISMOOTH® ST (Isoamyl Palmitate/Stearate): Green emollient with high spreadability and low tack as mineral oil alternative.



PROCEDURE

PHASE A

Neutralize acrylates copolymer with sodium hydroxide until pH=7. Under agitation, add remaining ingredients of Phase A and heat to 70 - 75°C.

PHASE B

In a separate vessel, combine all ingredients of Phase B and heat to 70 - 75°C. Under agitation, incorporate Phase B to Phase A. Mix until complete homogenization of both phases.

PHASE C

Cool down to 35-40°C, add Phase C and homogenize.

PHASE D

Adjust pH if necessary, with citric acid /sodium hydroxide.

WARNING TO USERS

The above formulation is just a suggestion. All information, including the conditions of use of IVL's products, should not replace the experimental checks that are essential to ensure and tailor the product for each specific application. It is the responsibility of the final formulator to respect the local legislation and obtain any required authorizations..

#SR 0975/23

BODY WASH

Liquid Soap Strength of Nature

SUGGESTIVE FORMULATION

PHASE	COMPONENTS	CHEMICAL DESCRIPTION	% BY WEIGHT	FUNCTION
A	Deionized Water	Aqua (Water)	q.s. to 100	Solvent
A	Disodium EDTA	Disodium EDTA	0.10	Chelating
B	OXITAINE® CP 30 APH	Cocamidopropyl Betaine	13.00	Foam Booster
B	SURFONIC® BIO 6000	Glycolipids	4.88	Biosurfactant
B	SURFONIC® BIO 5000	Glycolipids	2.18	Biosurfactant
B	Citric Acid	Citric Acid	q.s.	pH Adjuster
C	OXIPURITY® 1000 U GC	Glycerin	3.00	Humectant
D	Sodium Benzoate	Sodium Benzoate	0.50	Preservative
D	OXIFLOW® S 6800	Upon Request	3.57	Rheology Modifier
D	Fragrance	Parfum	0.90	Perfuming
E	Citric Acid	Citric acid	q.s.p. to pH	pH Adjuster

*Others – pH regulators, thickeners, preservatives, dyes and fragrance.

DISCOVER MORE ABOUT OUR SPECIALTY PRODUCT LINE:

SURFONIC® BIO 5000 (Glycolipids): acts as main or co-surfactant promoting mild cleansing.

SURFONIC® BIO 6000 (Glycolipids): performs outstanding, delivering spreadability and moist feel to the skin.

OXIFLOW® S 6800 (Sorbeth-450 Tristearate (and) Water (and) PEG-9 Cocoate (and) PEG-32 Distearate (and) PEG-175 Distearate): efficient thickening of surfactant-based systems, especially salt- and sulfate-free formulations which does not require neutralization.



PROCEDURE

PHASE A

Under agitation, dissolve EDTA in water.

PHASE B

Combine Phase B ingredients and pour over Phase A slowly and continuously, under agitation

PHASE C

Combine Phase C ingredients into the mixture, under agitation.

PHASE D

Add Phase D and mix until uniform. Check the pH at the end of the preparation.

PHASE E

If necessary, adjust pH.

WARNING TO USERS

The above formulation is just a suggestion. All information, including the conditions of use of IVL's products, should not replace the experimental checks that are essential to ensure and tailor the product for each specific application. It is the responsibility of the final formulator to respect the local legislation and obtain any required authorizations.

BODY CREAM

Body Moisturizer Strength of Nature

SUGGESTIVE FORMULATION

PHASE	COMPONENTS	CHEMICAL DESCRIPTION	% BY WEIGHT	FUNCTION
A	Deionized Water	Aqua (Water)	82.90	Vehicle
A	Disodium EDTA	Disodium Edta	0.10	Chelating
A	Acrylates/C10-30 Alkyl Acrylate Crosspolymer	Acrylates/C10-30 Alkyl Acrylate Crosspolymer	1.00	Rheology Modifier / Stabilizer
A	SURFONIC® BIO 6000	Glycolipids	7.20	Biosurfactant
A	SURFONIC® BIO 5000	Glycolipids	1.80	Biosurfactant
A	Panthenol	Panthenol	0.50	Skin Conditioner
A	Ethanol	Alcohol	1.00	Solvent
B	OXISMOOTH® CP	Isoamyl Caprylate/Caprata	2.00	Emollient
B	OXISMOOTH® CO	Isoamyl Cocoate	2.00	Emollient
C	Sodium Hydroxide	Sodium Hydroxide	q.s.	pH Adjuster
C	Citric Acid	Citric Acid	q.s.	pH Adjuster
D	Fragrance	Parfum	1.00	Perfuming
D	Phenoxyethanol (And) Caprylyl Glycol	Phenoxyethanol (And) Caprylyl Glycol	1.00	Preservative

*Others – pH regulators, thickeners, preservatives, dyes and fragrance.

DISCOVER MORE ABOUT OUR SPECIALTY PRODUCT LINE:

SURFONIC® BIO 5000 (Glycolipids): gives a balanced moisturizing effect, promoting a skin hydration over 24 hours, fast absorption, reduced residual stickiness and a velvety sensorial in comparison with common emulsifiers.

SURFONIC® BIO 6000 (Glycolipids): performs outstanding, delivering quickly absorption, equivalent spreadability, reduced oiliness, no greasy film and natural shine to the skin.

OXISMOOTH® CP (Isoamyl Caprylate Caprate): Green emollient with high spreadability, very dry touch and quickly absorption.

OXISMOOTH® CO (Isoamyl Cocoate): An efficient green alternative for silicone as skin and hair conditioning agent.



PROCEDURE

PHASE A

Under agitation, dissolve EDTA in the water. Sprinkle the Acrylates/C10-30 Alkyl Acrylate Crosspolymer powder into the water and let it hydrate. (*) (Check pH)
Incorporate remaining ingredients of Phase A, homogenizing completely after each addition. (Check pH)

PHASE B

Combine ingredients of Phase B and pour over Phase A slowly and continuously, under agitation. (Check pH)

PHASE C

Adjust pH with Phase C.

PHASE D

Add Phase D and mix until uniform. Check pH at the end of the preparation.

WARNING TO USERS

The above formulation is just a suggestion. All information, including the conditions of use of IVL's products, should not replace the experimental checks that are essential to ensure and tailor the product for each specific application. It is the responsibility of the final formulator to respect the local legislation and obtain any required authorizations..

#SR 0975/23

SULFATE FREE SHAMPOO

Gentle Cleansing and Moisturizing Infusion

SUGGESTIVE FORMULATION

PHASE	COMPONENTS	CHEMICAL DESCRIPTION	% BY WEIGHT	FUNCTION
A	Deionized Water	Aqua (Water)	q.s.p to 100	Vehicle
A	Dissodium EDTA	Dissodium EDTA	0.10	Chelating
B	OXITAINE® CP 30 APH	Cocamidopropyl Betaine	1.50	Surfactant
B	SURFONIC® BIO 5000	Glycolipids	17.07	Surfactant
C	GLYSOLV® EPH L	2-Phenoxyethanol	0.5	Preservative
B/E	Citric Acid 50%	Citric Acid 50%	q.s.p to pH	pH Adjuster
E	Fragrance	Parfum	q.s.p.	Fragrance
D	OXIFLOW® S 6800	Upon request	9.71	Rheology Modifier

*Others – pH regulators, thickeners, preservatives, dyes and fragrance.

DISCOVER MORE ABOUT OUR SPECIALTY PRODUCT LINE:

SURFONIC® BIO 5000 (Glycolipids): acts as main or co-surfactant promoting mild cleansing until the cortex and facilitates wet hair combing.

OXIFLOW® S 6800 (Sorbeth-450 Tristearate (and) Water (and) PEG-9 Cocoate (and) PEG-32 Distearate (and) PEG-175 Distearate): efficient thickening of surfactant-based systems, especially salt- and sulfate-free formulations which does not require neutralization.



PROCEDURE

PHASE A

Under agitation, dissolve EDTA in the water.

PHASE B

Combine ingredients of Phase B and pour over Phase A slowly and continuously, under agitation. (Check pH)

PHASE C

Add Phase C and adjust pH if necessary.

PHASE D

Add Phase D and mix until complete homogenization.

PHASE E

Add Phase E and mix until uniform. Check pH at the end of the preparation and adjust if necessary.

WARNING TO USERS

The above formulation is just a suggestion. All information, including the conditions of use of IVL's products, should not replace the experimental checks that are essential to ensure and tailor the product for each specific application. It is the responsibility of the final formulator to respect the local legislation and obtain any required authorizations..

#SR 0975/23

INDORAMA
V E N T U R E S